



Rhode Island Mineral Hunters
A 501 (c) (3) HP Organization

BOWEN-LITE

WWW.RIMH.US



CUMBERLANDITE –OFFICIAL STATE ROCK

BOWENITE – OFFICIAL STATE MINERAL

Volume 55

Issue 3

March 2017

RIMH 2017

RIMH

Officers

President Bill Wilson
Vice President Sherri Blennerhassett
Secretary Chris Tremblay
Treasurer Claire Cooper

Board Members

Steve Emma Ernie Zielinski
Buck Leach Lou Fazzina
Tony Cesana Leo Doucet
Bill Neal Don Fail

Departments/ Committees

Rachel Cesana - Field Trip Coordinator
Leo Doucet – Membership Person
Bill Neal - Librarian
Don Fail – Show Person
Tony Cesana - Parliamentarian
Bill Wilson - Historian

Webmaster - Bruce Hecker bbhecker@cox.net

Edited by Paul Koczwanski pakman844@aol.com

*If anyone would like to submit an article or anything for future publication let me know



HAPPY ST. PATRICK'S DAY

Harbor Seals



Upcoming Meeting Details

Executive Meeting date in March is:
Tuesday March 7th. All meetings start at 7pm.

This year meetings will be held at Lou Fazzinas' rock shop (Apple Valley Minerals)
7 Homestead Avenue
Smith field, RI 02917
*Homestead is off Farnum Pike.

The general meeting for this month will be held on March 14th at 7pm. The meeting location will be at the Community College of Rhode Island, Warwick campus room 1134

FIELD TRIP

MARCH FIELD TRIP: QUABBIN RESERVOIR SHAFT 10 SITE

DATE: MARCH 25TH (WEATHER PERMITTING: IF THERE IS STILL SNOW ON THE GROUND WILL NOT BE ABLE TO GO ON THIS DATE)

AN ALTERNATE FIELD TRIP WILL BE GIVEN IF ACCESS TO SITE IS SNOWED IN

TIME: MEETING AT PHILLIPS PLAZA AT 9:00AM (TAKES ABOUT 2 HRS TO GET THERE) LOOK FOR RED JEEP (MINE)

LOCATION: HARDWICK, MA

FIELD TRIP LEADER: RACHEL CESANA

CONTACT NUMBER : TO SIGN UP 401-766-9076.. DAY OF FIELD TRIP: 401-787-3130

This is the dump location for all the material that was removed to create a water shaft from Quabbin Reservoir to the Boston area in the 1930's. It overlooks a lovely beaver pond. The walk in is about 1/2 a mile on level ground (It's the access road to the shaft entrance point.) This makes it easy to get to but the large mound is quite steep and not recommended for young rock hounds. There is a limited amount of parking area at the site so we will meet at Phillips Plaza in Ware, MA.(You can actually see this plaza on Google Earth.) From here we will carpool in so this field trip will be limited to 20 people. Bring a loop or magnifying glass as many of the minerals are micros...

DIRECTIONS: TAKE RT 146 NORTH INTO MA TO RT I 90 WEST. TAKE EXIT FOR PALMER MA RT 32 NORTH. FOLLOW RT 32 NORTH INTO WARE MA. LOOK FOR PHILLIPS PLAZA ON YOUR RIGHT SIDE. HAS A SUPERMARKET IN IT AND A DUNKIN DONUTS ACCROSS THE STREET. WILL PARK HERE AND CARPOOL THE REST OF THE WAY.

IT IS VERY IMPORTANT THAT YOU LET ME KNOW IF YOU ARE COMING SO THAT I HAVE YOUR PHONE NUMBER IN CASE WE NEED TO CANCEL AND TO MAKE SURE WE DON'T LOSE YOU ON THE WAY THERE. PLEASE TAKE RACHEL'S PHONE NUMBER ON DAY OF TRIP IN CASE YOU GET LOST ON THE WAY OR WILL BE LATE OR TO CANCEL THAT MORNING.

FOR THOSE WHO MAY BE INTERESTED SOME OF US WILL BE GOING TO THE WESTERN MASS MINERAL SHOW AFTER COLLECTING. IT'S AT HADLEY FARMS MEETING HOUSE ON RT 9 IN HADLEY MA. SEE THEIR SITE

<http://www.westernmassmineralshow.com/>

A note from the field trip coordinator Rachel Cesana

If anyone knows of any places we can go for a field trip please let her know. She wants to line up some places for the upcoming year. Please relay all pertinent information to her such as place names, contacts(property owners and/ or persons in charge), phone numbers or other means of contact. Rachel's phone number is (401) 766-9076. Email a_cesana@verizon.net

To all Member's a message from Tony and Rachel Cesana

Rachel and I will start our mineral open house on Friday March 10th. We will talk all things club related if people want to use our scope to study their specimen's or check for fluorescent materials. If wanted can do some tumble polishing, demo's field trimming and maybe some wire wrap thrown in.

This is at 85 St Paul St North Smithfield RI 02896 starting at 7:00 pm. Please call by Thursday at 401-766-9076.

Direction from the south 146 north to Slatersville exit take right at top of exit at light take another right at next light take left onto St Paul street

Member submitted article

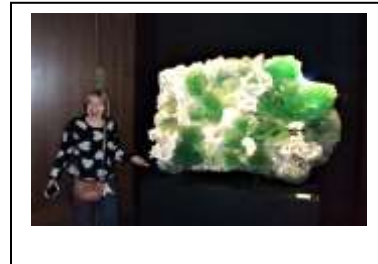
Field Trip to Peabody Museum at Yale February 2017 by Tony Cesana

On Saturday February fourth, the club took a field trip to the Yale Peabody Museum, Many of us have been there before but the mineral display has been completely redone. About 10 people attended the field trip and were impressed with the quality of the display's. We arrived at 10:00 am for the opening of the museum and got right in. For us mineral enthusiasts, we went right upstairs to the mineral displays. For many who had been there before, we were pleasantly surprised at the updated displays with many new items and some old favorites. The displays were just recently redone with a huge and expensive renovation. What has resulted, is a world class mineral museum. If you have been before, the renovation well worth going again and if you have never been, It is absolutely worth the price of admission.

After seeing much of the displays, we all met and walked down to a local restaurant and had a meal together. Laughter and good food make a great combination. We then returned to the museum and then went downstairs where the dinosaurs and fossil remains are displayed. Many unique displays were shown. Soon,they will have a major renovation and overhaul as well.

One thing of note is that the museum is known to display other people's specimens as an on loan program. They will change things out about every six months so whenever you go there will be something new to see. Please take advantage of this wonderful resource.

Photos from the February Field trip



5th Annual New England Mineral ConferenceThe *5th Annual New England Mineral Conference (NEMC)* will be held Friday, May 12 through Sun., May 14, 2017 at the Grand Summit Resort Hotel and Conference Center at Sunday River, Newry, Maine. Presentations on both New England and non-New England topics are scheduled on Friday evening and during the day on Saturday. In addition, there will be a Friday evening banquet, mineral displays and exhibits, and both a voice and a silent auction in support of the conference. Dealers can be visited from Friday afternoon through Saturday evening (except during the presentations). The weekend culminates with a field trip on Sunday. An important feature of the conference for students in grades 3-12 is *Education Day*, which occurs on Friday, May 12. On *Education Day*, students can visit over 20 different stations to learn about minerals and geology. There is also a *Poster Contest* which gives the opportunity for students to submit a research project about anything relating to the rocks and minerals of New England. All submitted posters will be displayed throughout the conference. The *New England Mineral Conference* is a division of the non-profit *New England Mineral Association*.

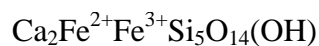
For further information about the conference please visit: www.nemineralconferen

For information about *Education Day/Poster Contest* please visit: www.nemineraleducation.org

Mineral of the Month

In this continuing series, I am providing information for those members who are new to the field of mineral collecting and need to know what you are looking for when you go out on field trips or just on your own. Some common minerals you may see but, might not know what they are. This month, I will be looking into the mineral *babingtonite*. *This is the official mineral of Massachusetts. This mineral may be found at our next field trip at Quabbin reservoir*

Babingtonite is a not a common mineral, and is usually associated with [zeolites](#). It is found as small, dark, lustrous crystals on light-colored zeolites, creating specimens of strong contrast. Such specimens are much sought after by collectors. Recent findings in China have produced some very large crystals unlike any others previously known. Babingtonite sometimes [pseudomorphs](#) into other minerals, especially [amphiboles](#) as witnessed by the abundance of [altered](#) Babingtonite at Paterson and Prospect Park, New Jersey.



This is the formula for pure Babingtonite. However, it usually contains a small amount of manganese replacing some of the 2+ iron, and because of this its formula is sometimes written $\text{Ca}_2(\text{Fe}^{2+}, \text{Mn})\text{Fe}^{3+}\text{Si}_5\text{O}_{14}(\text{OH})$.

Composition	Basic calcium iron silicate, very often with some manganese
Variable Formula	$\text{Ca}_2(\text{Fe}^{2+}, \text{Mn})\text{Fe}^{3+}\text{Si}_5\text{O}_{14}(\text{OH})$
Color	Black, dark green, dark brown, bluish gray
Streak	Gray
Hardness	5.5 - 6
Crystal System	Triclinic
Crystal Forms and Aggregates	Rarely as prismatic crystals. Most often as small flat plates and in equant crystals, but sometimes in grainy and platy aggregate s. Also in thin flattened rectangular crystals and in rosette shaped aggregates. Babingtonite crystals are sometimes striated .
Transparency	Opaque. Translucent in thin splinters.

Luster	Submetallic
Cleavage	2,2 - forming at an angle near 90°
Fracture	Subconchoidal to uneven
Tenacity	Brittle
Other ID Marks	Occasional weak attraction to magnetic fields .
In Group	Silicates ; Inosilicates
Striking Features	Color, luster, mineral associations, and paramagnetism .
Environment	As a secondary mineral in igneous basalt environments.
Rock Type	Igneous

In the U.S., the most notable occurrence is the Lane Quarry, Westfield, Hampden Co., Massachusetts. There are several other quarries in Massachusetts that have produced notable Babingtonite crystals, including the Cheapside Quarry, Deerfield, Franklin Co.; Blueberry Hill, near Woburn, Middlesex Co.; and Mount Tom, Holyoke, Hampden Co. For additional information, see minerals.net

Very large crystals associated with Prehnite came from the Roncari quarry, East Granby, Hartford Co., Connecticut. The New Jersey [traprock](#) quarries, especially Paterson and Prospect Park, in Passaic Co. produce interesting [rosette](#) shaped Babingtonite aggregates, very often [alter](#) to bluish-gray [Actinolite](#). [Manganbabingtonite](#) is well known from the Iron Cap Mine, Graham Co., Arizona.

Common Mineral associations [Quartz](#), [Prehnite](#), [Apophyllite](#), [Stilbite](#), [Chabazite](#), [Natrolite](#), [Epidote](#)

