



Rhode Island Mineral Hunters
A 501 (c) (3) HP Organization

BOWEN-LITE

WWW.RIMH.US



CUMBERLANDITE –OFFICIAL STATE ROCK

BOWENITE – OFFICIAL STATE MINERAL

Volume 57

Issue 4

April 2019

RIMH 2019

RIMH

Officers

President Sherri Blennerhassett
Vice President Tony Cesana
Secretary William Wilson
Treasurer Claire Cooper

Board Members

William Wilson(President emeritus) Ernie Zielinski
Mahrukh Anwar Lou Fazzina
Tony Cesana Dante Caprara
Rachel Cesana Bruce Hecker

Departments/ Committees

Rachel Cesana - Field Trip Coordinator
Chris Tremblay – Membership Person
Bill Neal - Librarian
Tony Cesana – Show Chairman
Tony Cesana - Parliamentarian
Bill Wilson - Historian
Webmaster - Bruce Hecker bbhecker@cox.net
Edited/photos by Paul Koczwanski pakman844@aol.com
*If anyone would like to submit an article or anything for future publication let me know



Yellowstone National Park , Wyoming

Upcoming Meeting Details

Executive Board Meetings are on the last Tuesday of the month(April 30th) at 7pm

This year executive meetings will be held at Lou Fazzinas' rock shop (Apple Valley Minerals)
7 Homestead Avenue
Smith field, RI 02917

*Homestead is off Farnum Pike.

The next general meeting will be the second Tuesday in March(9th). This meeting will feature the annual RIMH rock and mineral auction, details are explained further in this newsletter(***)



Great Salt Lake,
Utah

Open house at Rachel and Tony Cesana's will continue on Fridays for rock talk and fun. Please let me know if you intend to come by Thursday night. If no one calls I might not be there if you just show up.
401-766-9076

We have just concluded our 1st wire wrapping class and will have another later in the year. If anyone is interested in a rock tumbling class please let me know and we will start one in April

Please thank Elena Holden for joining the Field Trip committee. We are still looking for more help so if you can spare some time please call me. We are looking for someone who could possibly take over next year. I would like to have time to train someone as I'm not sure I'll be available next year. Please see me at the meeting or call 401-766-9076

Show news:

Although the show is far away in October it is not too early to prepare the sign-up sheets will be available at all meetings beginning in March. We need people to cover our booths and security at the entrances to prevent last year's loss of revenue. Many hands make light work. The show committee will begin monthly meetings the first Thursday of the month at Tony & Rachel's house 85 St Paul St North Smithfield, RI 02896 6:30 pm start time usually one hour or less as time constraint. I am still searching for someone to join that would be second lead to eventually take over. Please newer members consider this important work as it is the major source of income for the club. Also we have fun because we are a crazy bunch the more the merrier.

*****Annual RI mineral Hunters Auction April 9th, 2019** At our second meeting of the year we will have our auction at the regular meeting If you are interested in selling you will need to prepare your specimens by labeling them this way:

For Example Mineral name: Quartz Mineral location: (where found) ex Diamond Hill, Cumberland, RI Minimum Bid: (smallest amount you would want for said mineral) or donate to club fund

If you want to sell a whole box or flat of minerals in one fell swoop we still would like all minerals in the box to have the same info. Please do not use this as a means to get rid of junk rock. At the auction all sellers will be given a letter and that will be your seller ID All your specimens should be marked with this letter so get there a little early to give yourself time to do this All members who wish to bid will be given a number as their ID Cash will be taken at end of auction to avoid confusion. No credit cards accepted. We don't have the means to process credit cards.

If you have any questions please call Rachel Cesana 401-766-9076)

May 11-May 13, 2018: *7th Annual New England Mineral Conference*, Grand Summit Resort Hotel and Conference Center at Sunday River, Newry, Maine. The conference includes lectures, mineral exhibits, mineral dealers, auctions, a banquet, and a field trip. The NEMC also sponsors *Education Day* and a *Poster Contest* for students in grades 3-12. For further details and registration information visit: <https://www.neminer.org/2019/conference/index.html> or https://www.neminer.org/2019/education/education_day.html

April 13, 2019 FIELD TRIP:

Where: Quabbin Shaft #10 Hardwick MA - GPS +42.377188 N -72.162173 W

Meet at Phillips Shopping Plaza, Ware, Ma - GPS +42.254757 N -72.252751 W

Please call by March 21 and leave name and cell number. If you have not called you will not be allowed on field trip. There is limited parking and will need to limit how many can come to about 16 people

Trip Leader: Rachel Cesana 401-766-9076 trcesana@gmail.com

When: Saturday April 13, 2019 AT 9:00 am to 12 pm

Tools needed: Small garden tools, rock hammer, loop, material to rap finds in.

Dress: Dress for Late March weather conditions, water proof shoes a plus as site could be muddy.

Minerals to be found: Babingtonite, epidote, fluorite and many others – mostly micros, but very nice! (*See below for full list of minerals at this location*). Also, the scenery here is stunning, even at this time of the year!_This tailing pile is the result of the tunneling done to bring the Quabbin Reservoir water to Boston..

Directions: From RT 146 north or RT 395 north (which ever is easier from your locality) take RT I 90 west in MA. From RT I 90 take the exit for RT 32 north (Palmer MA). Follow RT 32 north to Ware MA. Look for Phillips Plaza on your right. It takes about 2 hrs to get there from Providence so give yourself extra time in case of traffic delays. We will park here and car pool the rest of the way as there is room for only about 4 vehicles. Please be at the Phillips Plaza by 9:00 am. Look for red Jeep Liberty.

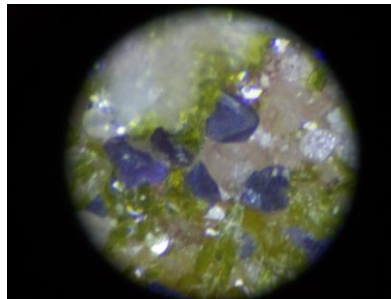
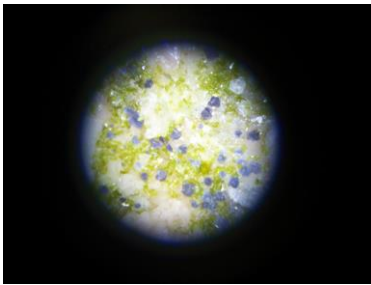
These directions if you get separated from group.

From Phillip's Plaza take right onto Rt. 32 and follow thru Hardwick . here it splits into 32 and 32a. make sure to follow Rt. 32. Watch for Shunpike Rd (it has a sign for a kiln and railroad tracks crossing Shunpike) Take left onto Shunpike and follow to end then take right onto Prouty Rd. Follow past small farms til you get to Taylor Hill Rd on left (there is a larger farm here with a large sign) take left onto Taylor and follow til you go over small bridge, gate will be on the right. **Do Not Block Gate.** Walk straight in at the gate about half a mile. You will see what looks like a large cement sewer cover.. Take right through woods here to tailing piles. There is a path.

BECAUSE THIS IS A WEATHER SENSITIVE SITE MAKE SURE I HAVE YOUR CELL PHONE NUMBER WHEN YOU LEAVE A MESSAGE OR EMAIL . I MAY HAVE TO CALL THAT MORNING TO CANCEL

Mineral List

Albite	Fluorite	Limonite	Sphalerite
'Allanite'	Galena	Magnetite	'Stilbite'
Anglesite	Goethite	Microcline	Thomsonite-Ca
'Apatite'	Gypsum	Opal	Titanite
'Apophyllite'	var: Selenite	var: Opal-AN	Tremolite ?
Babingtonite	'Heulandite'	Orthoclase	Zircon
Calcite	Ilmenite	Prehnite	
'Chlorite Group'	'K Feldspar	Pyrite	
Epidote	var: Adularia'	Quartz	
	Laumontite	Rutile	



Fluorite and Epidote specimens from Quabbin Reservoir Photos by Tony Cesana

RIMH FIELD TRIP PROPOSAL APRIL 27, 2019

Please call to sign up for all field trips at least 2 days before trip. If no one calls I might not be there

Destination: Sneece Pond Copper Mine, Staples Road, Cumberland, RI

Date(s)/time of trip: Saturday, APRIL 27, 2019 AT 9:00 am

Trip leader: Rachel Cesana, 401-766-9076, a_cesana@verizon.net

day of trip use 401-787-3129

Please leave you cell number so we can contact in case of cancelation

Type of collecting: Mine dumps.

What can be found? Copper minerals, actinolite, magnetite

Tools/equipment: : hammers & small sledges, garden tools, wedges, prybars, spray bottle w/water, protective eyewear, close-toed shoes, **bug spray**, and always, *common sense*. There are no sanitary facilities at this site.

Clothing: Dress for early spring conditions

Special information: Please call 48 hrs in advance. Make sure you bring bug spray!!!

Driving directions: take 295 North to RT 122 North. From 122 take right onto Nate Whipple Highway.(about 2 to 3 miles from 295) . Take left onto Staples Rd and follow to Power Station. We will hike from here.

MAY FIELD TRIP; KEEP THIS DATE OPEN

MAY 18TH BETTS MINE FOR RHODONITE AND GARNETS...RAIN DATE MAY 19TH

More info to follow in May newsletter

Crystal Grove Field Trip

On June 1st and 2nd the club will pay for digging fees only at Crystal Grove mine in St. Johnsville, NY. Will be digging for Herkimer Diamonds. This is a campground as well.

The campground has a pig roast on the 1st so if you are interested in this please contact the campground at crystalgrove.com look under events to buy tickets. If you plan to stay overnight you must seek your own accommodations. Please let us know if you are coming and for how many days. I will need to get a check from the treasurer to pay the dig fees so I really do need a head count. We must know by May 25th. Directions are also on their website.

Mineral of the Month .

In this continuing series, I am providing information for those members who are new to the field of mineral collecting and need to know what you are looking for when you go out on field trips or just on your own. Some common minerals you may see but, might not know what they are. This month, I will be looking into the mineral ; Anglesite

"Anglesite is a secondary lead mineral that always forms through the alteration of lead sulfides, primarily Galena. Anglesite crystals may contain impurities of Galena, giving a specimen a gray to black color. In some localities, Anglesite forms as a pseudomorph after Galena, giving the crystals a false isometric form."

"Gray and black banding is present in some massive Anglesite specimens, which can be seen

when a specimen is polished or sliced. Such specimens may even contain unaltered Galena in the center, which did not change over to Anglesite when the outer layers altered. An amber-red Anglesite from Touissit, Morocco, has been synthetically colored by immersing light yellow crystals in bleach”.

“Anglesite is named for its type locality at the Parys Mine, on the Island of Anglesey, Wales, in the United Kingdom”.

“Chemical Formula $PbSO_4$
 Composition lead sulfate
 Color Colorless, white, yellow, brown, green, orange, red, gray. May also be black from Galena impurities, which can also cause it to be banded gray and black. Sometimes multicolored with yellow and white or colorless zoning

Streak White, but light gray if it has Galena impurities.

Hardness 2.5 - 3

Transparency Transparent to translucent in thin splinters

Luster Adamantine, resinous

Tenacity Brittle

Fracture Conchoidal “

“ Uses Anglesite is an ore of lead, although good crystals are preserved when possible, due to the high demand and cost of good specimens.”

“ Locations in the US In the U.S., white crystals associated with Pyromorphite have come from the Wheatley Mines in Phoenixville, Chester Co., Pennsylvania. The area of Joplin, Ottawa Co., Missouri has produced isometric pseudomorphs of Anglesite over Galena, as well as banded Anglesite. This mineral has also come from the Coeur d'Alene District, Kellogg, Shoshone Co., Idaho; the Blanchard Mine, Bingham, Socorro Co., New Mexico; the Mammoth-Saint Anthony Mine, Tiger, Pinal Co., Arizona; and Castle Dome, Yuma Co, Arizona.”

Common Mineral Associations

“Galena, Cerussite, Smithsonite, Hemimorphite, Sphalerite, Azurite, Malachite, Sulfur, Pyromorphite, Linarite”

Information and photos by Minerals .net. For more information see minerals.net



